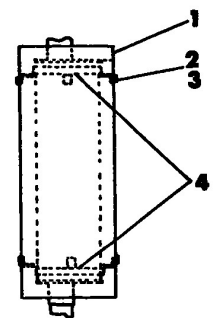
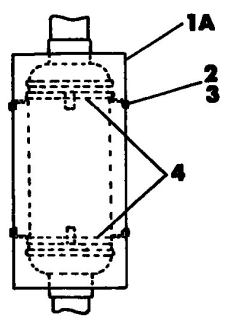


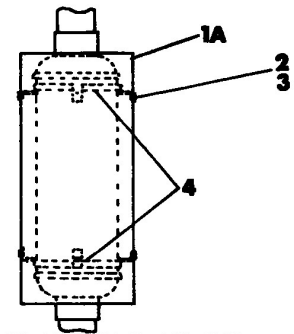
6-814-000102



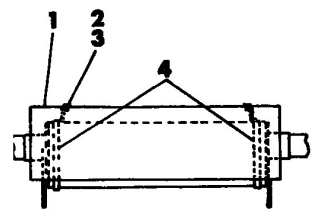
USE ON ALL FORD 300 & 391 ENGINE INSTALLATIONS WITH VERTICAL MUFFLERS.



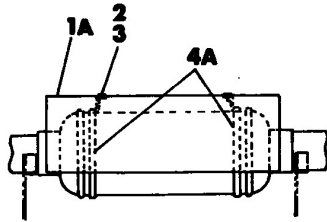
USE ON ALL CUMMINS V-378-C140 ENGINE INSTALLATIONS WITH VERTICAL MUFFLERS



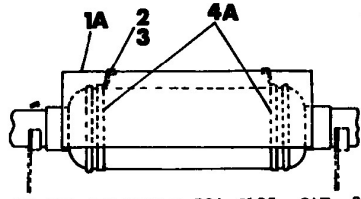
USE ON ALL CUMMINS CS-464-C180, CAT. 3145, (GMC 3-53N-TM'S ONLY) GMC 4-53N & CUMMINS V-504-C185 ENGINE INSTALLATIONS WITH VERTICAL MUFFLERS.



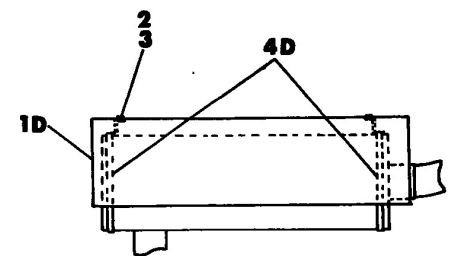
USE ON ALL FORD 300 & 391 ENGINE INSTALLATIONS WITH HORIZONTAL MUFFLERS.



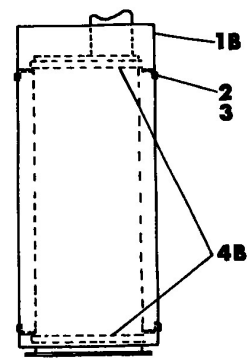
USE ON ALL CUMMINS V-378 (EXCEPT RT48/49 & RT58), INTERNATIONAL UC-301, & (GMC 3-53N-RT'S ONLY) ENGINE INSTALLATIONS WITH HORIZONTAL MUFFLERS.



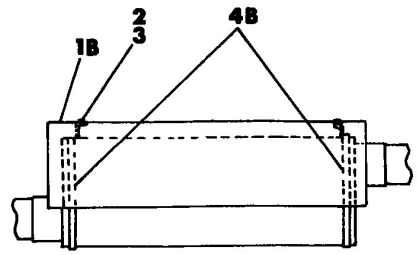
USE ON ALL CUMMINS V-504-C185, CAT. 3145, CAT. 3150, (GMC 3-53N-IND. ONLY) ENGINE INSTALLATIONS WITH HORIZONTAL MUFFLERS



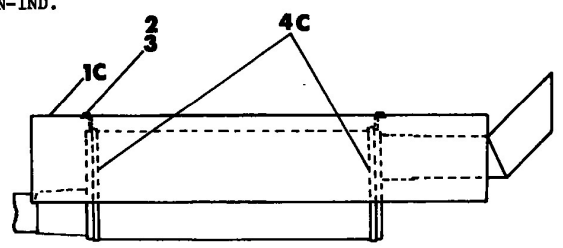
USE ON ALL CUMMINS V-378 ENGINE INSTALLATIONS IN RT48/49 AND RT58. AND ALL GMC 4-53N ENGINE INSTL'S. WITH HORIZONTAL MUFFLERS AND ALL ENGINES ON THE RT60 & RT60S.



USE ON ALL CAT. 3160, GMC 6-53N, CUMMINS V-504-C & V-555-C ENGINE INSTALLATIONS WITH VERTICAL MUFFLERS.



USE ON ALL GMC 6-53N, ENGINE INSTALLATIONS WITH HORIZONTAL MUFFLERS



USE ON CAT 3145 ENGINE INSTALLATION (1012 IND. ONLY)